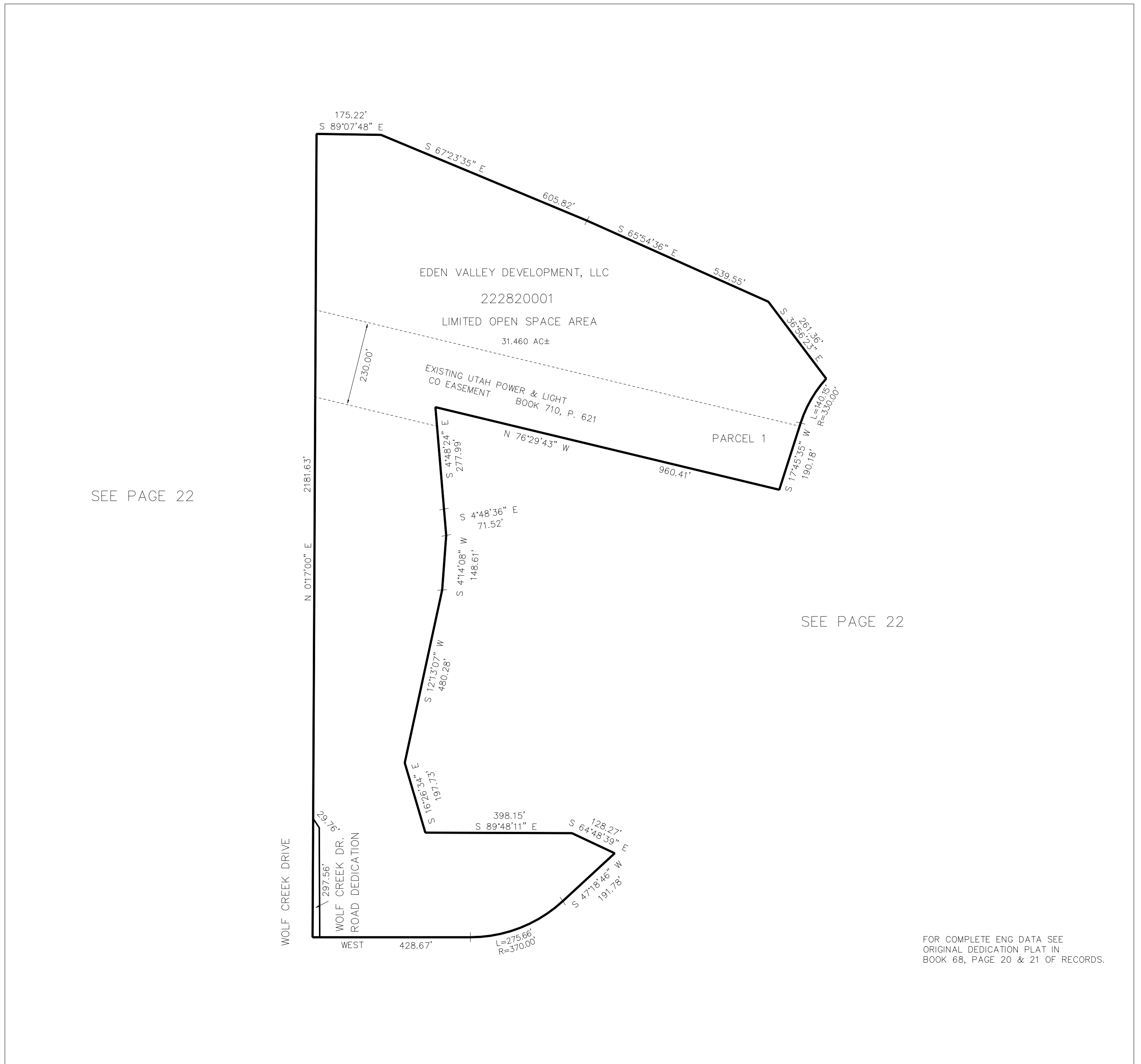


PART OF THE NE 1/4, OF SECTION 27, T.7N., R.1E., S.L.B. & M.  
GOLF COURSE AREA PARCEL 1

TAXING UNIT: 203

IN WEBER COUNTY  
SCALE 1" = 200'



SEE PAGE 22

SEE PAGE 22

FOR COMPLETE ENG DATA SEE  
ORIGINAL DEDICATION PLAT IN  
BOOK 68, PAGE 20 & 21 OF RECORDS.